



# THE OXFORD COVID-19 GOVERNMENT RESPONSE TRACKER (OXCGRT)

ECB workshop on high frequency data

**16 October 2020**

**Thomas Hale, Associate Professor**

# What is the Oxford COVID-19 Government Response Tracker (OxCGRT) for?



- Provides a systematic cross-national, cross-temporal measure of how government responses have evolved over the full period of the disease's spread.
- Public health experts are learning in real time what measures are more or less effective – need up-to-date, comparable, consistent data.
- Helps answer two critical research questions.
  - What effects do government responses have, How do effects vary across different populations, countries, and contexts?
  - What leads governments to adopt different policies?

# Our approach (see [www.bsg.ox.ac.uk/covidtracker](http://www.bsg.ox.ac.uk/covidtracker))

- 18 indicators in closure and containment, health, and economic policy
- Recorded on ordinal scale to capture not just the presence but also the degree of response.
- 4 simple linear indices that are normalized to vary from 0 to 100.
- 190+ countries.
- Subnational coding for the US, Brazil, UK (and growing).
- The database is freely available online and updated continuously.

ID	Name	Type	Targeted/ General?
<b>Containment and closure</b>			
C1	School closing	Ordinal	Geographic
C2	Workplace closing	Ordinal	Geographic
C3	Cancel public events	Ordinal	Geographic
C4	Restrictions on gathering size	Ordinal	Geographic
C5	Close public transport	Ordinal	Geographic
C6	Stay at home requirements	Ordinal	Geographic
C7	Restrictions on internal movement	Ordinal	Geographic
C8	Restrictions on international travel	Ordinal	No
<b>Economic response</b>			
E1	Income support	Ordinal	Sectoral
E2	Debt/contract relief for households	Ordinal	No
E3	Fiscal measures	Numeric	No
E4	Giving international support	Numeric	No
<b>Health systems</b>			
H1	Public information campaign	Ordinal	Geographic
H2	Testing policy	Ordinal	No
H3	Contact tracing	Ordinal	No
H4	Emergency investment in healthcare	Numeric	No
H5	Investment in Covid-19 vaccines	Numeric	No
<b>Miscellaneous</b>			
M1	Other responses	Text	No

# Our approach (see [www.bsg.ox.ac.uk/covidtracker](http://www.bsg.ox.ac.uk/covidtracker))

- **Citizen science:** Data is collected and reviewed in real time by a team that has comprised more than 400 volunteers from Oxford University and partners.

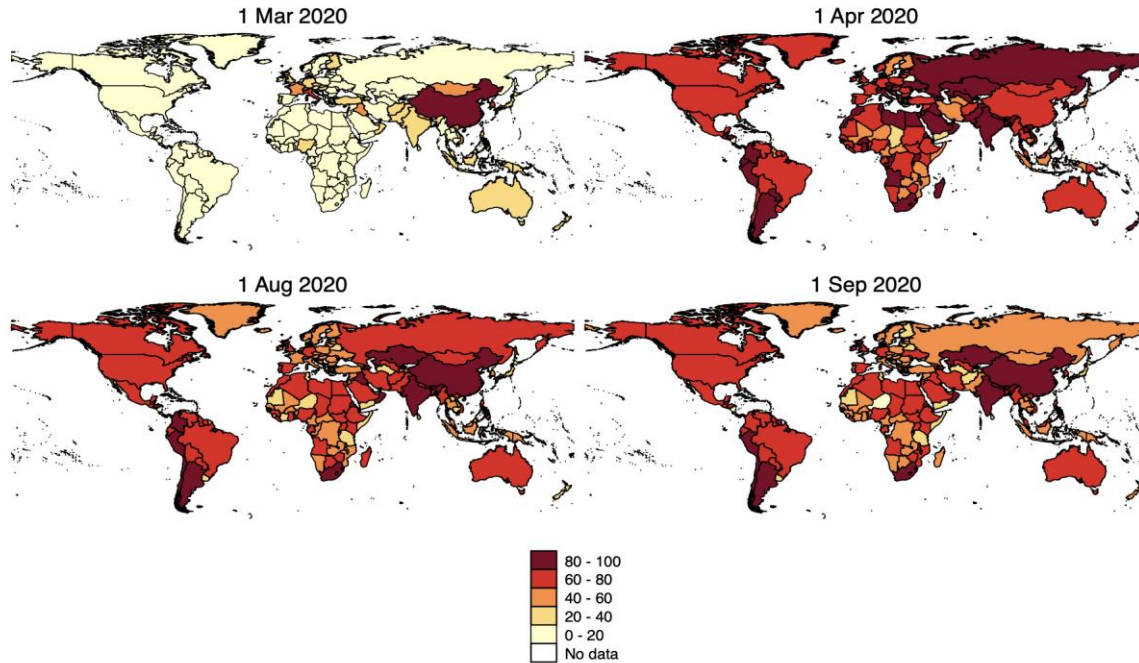


Research Assistants: Emily Cameron-Blake, Helen Tatlow, Laura Hallas, Saptarshi Majumdar.

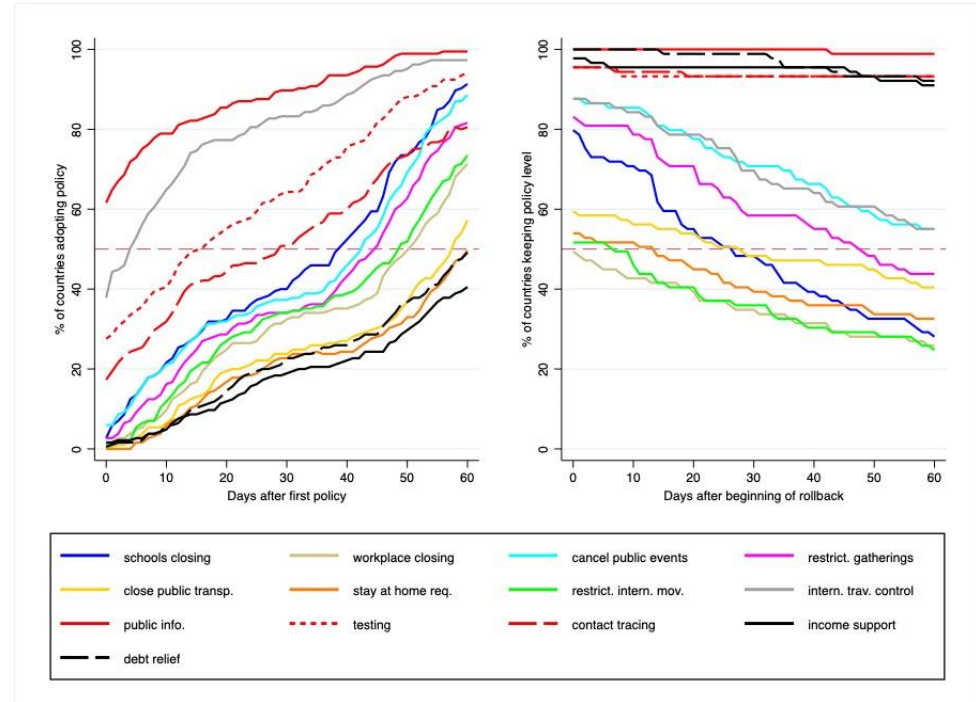
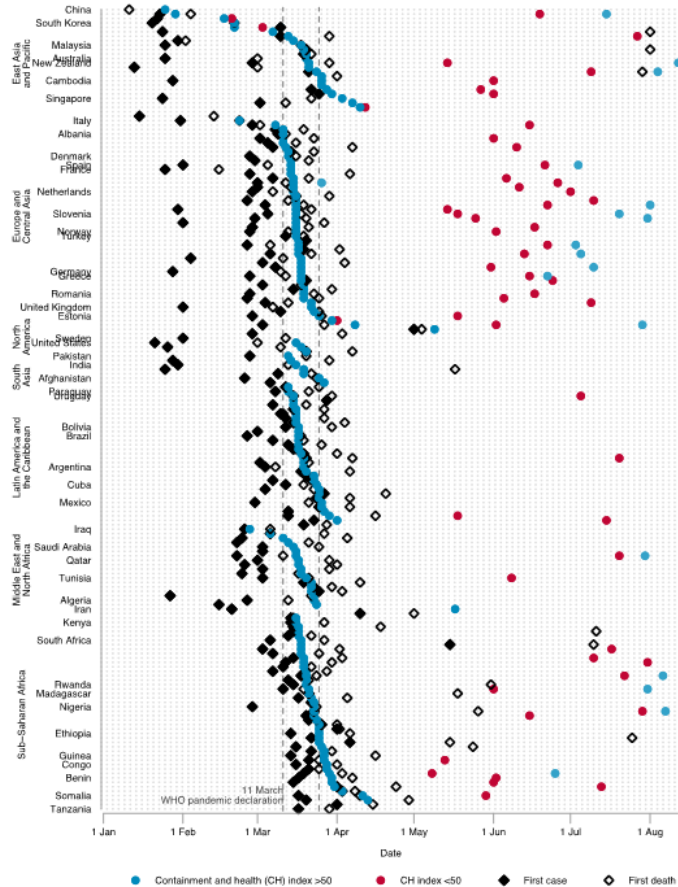
Contributors to the project include: Aditya Lolla, Ahmed Safar, Alan Yang, Alejandrina Cripovich, Alejandro Franco, Aleksander Zagajewski, Alexander Mok, Alfredo Ortega, Ali Arsanlan Pasha Siddiqui, Alice Eddershaw, Alonso Moran de Romana, Amanda Costa, André Houang, Andrea Garaiova, Andrea Klaric, Andreea Anastasiu, Andrew Brown, Andrew Wood, Andrew Krachkov, Anita Pant, Anjali Viswamohanam, Anna Bruverer, Anna Paula Ferrari Matos, Anna Petherick, Anna Welsh, Annalena Pott, Anthony Sudarmawan, Anupah Makoodon Makood, Arindam Sharma, Ariq Hatibie, Arkar Hein, Arthur Lau, Ayanna Griffith, Babu Ahamed, Barbara Roggeveen, Beatriz Franco, Beatriz Kira, Ben Ignac, Ben Luria, Benjamin Parker, Benjamin Peart, Bilal Majeed, Blessing Oluwatosin Ajimoti, Boloredene Battsengel, Bronwyn Gavine, Bugei Nyaosi, Camilla Sacchetto, Carla Almeida da Vila, Carolina Martinelli, Carolina Scherer Beidacki, Caroline Weglinski, Cassy Inman, Celso António Coelho Júnior, Charlotte Rougier, Chelsea Jackson, Chenxi Zhu, Chloe Mayoux, Christian Lumley, Clara Pavillet, Connor Lyons, Crstihian Pulido, Dan Mocanu, Dane Alivarius, Dang Dao Nguyen, Daniel Pereira Cabral, Dario Moreira, Davi Mambiona Marques Romão, Dayane Ferreira, Delgermaa Munkhgerel, Denilson Soares Gomes Junior, Diane Brandt, Dita Listya, Edgar Picon-Prado, Edward O'Brien, Elaine Fung, Eleanor Altamura, Elisabeth Mira Rothweiler, Elisângela Oliveira de Freitas, Ellen Sugrue, Emily Cameron-Blake, Emma Leonard, Emmanuel Mawuli Abalo, Ethan Teo, Fabiana da Silva Pereira, Fatima Zehra Naqvi, Femi Adebola, Finn Klebe, Francesca Lovell-Read, Francesca Valmorbidia McSteen, Gabriel de Azevedo Soyer, Gabriel Podesta, Garima Rana, Gauri Chandar, George Sheppard, Grace Mzumara, Guilherme Ramos, Guillermo Miranda, Gulnoza Mansur, Hakeem Onasanya, Hala Sheikh Al Souk, Hang Yuan, Heather Walker, Helen Tatlow, Henrique Oliveira da Motta, Horácio Figueira de Moura Neto, Huma Zile, Hunter McGuire, Ifigenia Xifre Villar, Ilya Zlotnikov, Inaara Sundary, Indira Clancy, Ingrid Maria Johansen, Innocent Mbaguta, Isabel Jorgensen, Isabel Seelaender Costa Rosa, Isabela Blumm, Isabela Blumm, Jake Lerner, James Fox, James Green, Javier Pardo-Diaz, Jeanna Kim, Jenna Hand, Jeroen Frijters, Jessica Anania, Joanna Klimczak, João Ferreira Silva, João Gabriel de Paula Resende, John Miller, Joris Jourdain, José Renato Venâncio Resende, Joseph Ssentongo, Joy Carveth, Juan David Gutierrez, Judy Cossins, Jui Kore, Juliana Moura Bueno, Ka Yu Wong, Kaisa Saarinen, Kaitlyn Green, Kangning Zhang, Karoline Becker, Katherine McCreery, Katherine Tyson, Katrina Marina, Kaushalya Gupta, Kelly Daniels, Kristie Jameson, Lama Khaiyat, Lana Ahmad, Laura Chamberlain, Laura Chavez-Varela, Laura de Lisle, Laura dos Santos Boeira, Laura Hallas, Leanne Giordano, Leimer Tejada Frem, Leticia Plaza, Lilliana Estrada Galindo, Lin Shi, Lione Alushula, Liu (Victoria) Yang, Lore Purroy Sanchez, Louisa-Madeline Singer, Lucas Tse, Lucia Soriano, Lucy Goodfellow, Luiz Guilherme Roth Cantarelli, Manikarnika Dutta Dutta, Manjit Nath, Marcela Mello Zamudio, Marcela Reynoso Jurado, Mareeha Kamran, Maria de los Angeles Lasa, Maria Leticia Claro de Faria Oliveira, Maria Luciano, Maria Paz Astigarraga Baez, Maria Puolakainen, Mariam Raheem, Marianne LaFuma, Marie Mavrikios, Mark Boris Andrijanic, Marta Koch, Martha Stolze, Martina Lejtregger, Matheus Porto Luena, Maurice Kirschbaum, Mauricio Nardi Valle, Megan McDowell, Melody Leong, Michael Chen, Michelle Sharma, Minah Rashad, Monika Pyarali, Moza Ackroyd, Mukta Panchal, Nadia Nasreddin, Nadine Dogbe, Natalia Brigagão, Natália Colvero Maraschin, Natália de Paula Moreira, Natalia Espinola, Nate Dolton-Thornton, Natsumo Shinagawa, Negin Shahiar, Nicole Guedes Barros, Nomondalai Batjargal, Oksana Matliash, Olga Romanova, Olivia Route, Pamela Gongora, Paola Del Carpio Ponce, Paola Schietekat Sedas, Paraskevas Christodouloupoulos, Patricia Silva Castillo, Pedro Arcaín Riccetto, Pedro Ferreira Baccelli Reis, Pedro Santana Schmalz, Phyu Phyu Thin Zaw, Pollyana Lima, Pollyana Pacheco Lima, Precious Olajide, Prianka Rao, Primrose Adjepong, Priya Lakshmy Tbalasubramaniam, Priyanka Bijlani, Qingling Kong, Quynh Lam, Rahima Hanifa, Raveena Joseph, Rene' Landers, Rene' Landers, Ricardo Miranda Rocha Leitoa, Robert Gorwa, Robin Thompson, Rodrigo Furst de Freitas Accetta, Rose Wachuka Macharia, Rotimi Elisha Alao, Rushay Naik, Saba Mahmood, Safa Khan, Salim Salamah, Saptarshi Majumdar, Sara Sethia, Sena Pradipta, Serene Singh, Seun Adebayo, SeungCheol Ohk, Shabana Basij-Rasikh, Shoaib Khan, Shwetanshu Singh, Silvia Shen, Simphiwe Stewart, Siu Cheng, Sophie Pearlman, Stefaan Sonck Thiebaut, Stephanie Guyett, Susan Degnan, Syed Shoaib Hasan Rizvi, Tamoi Fujii, Tanyah Hameed, Tatianna Mello Pereira da Silva, Tatsuya Yasui, Tello Qhotsokoane, Teresa Soter Henriques, Terrence Epie, Teruki Takiguchi, Tetsukela Anyiam-Osigwe, Theo Bernard, Thomas Hale, Thomas Rowland, Tilbe Atav, Tim Nusser, Tiphaine Le Corre, Toby Phillips, Trevor Eddobor, Twan van der Togt, Uttara Narayan, Veronique Gauthier, Will Marshall, William Dowling, William Hart, Yotam Vaknin, Yulia Taranova, Zara Raheem, Zilin Tu, Zoe Lin, Zoha Inman, Zunaira Mallick.

# Patterns: a global response

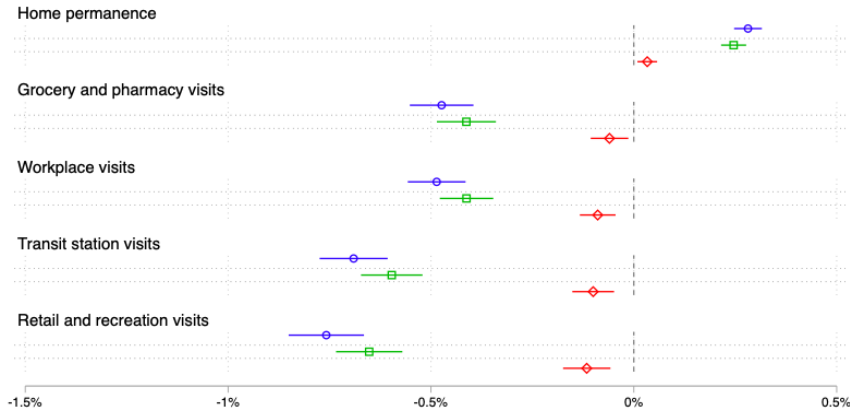
## Containment and Health Index



# Patterns: initial herd behavior, shifting to differentiation



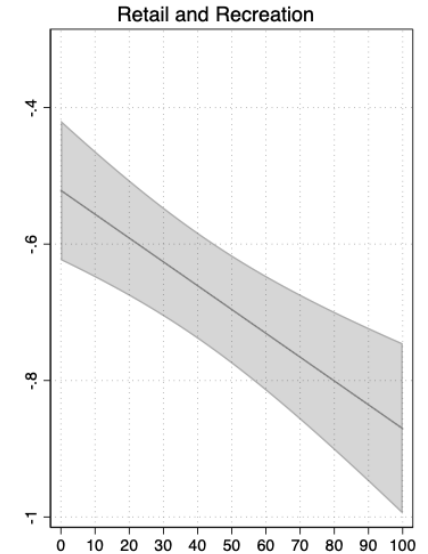
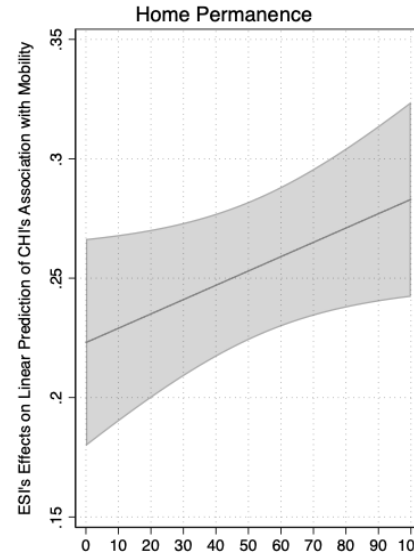
# Patterns: associations with mobility



Mobility change associated with a one-unit increase in each OxCGRT index

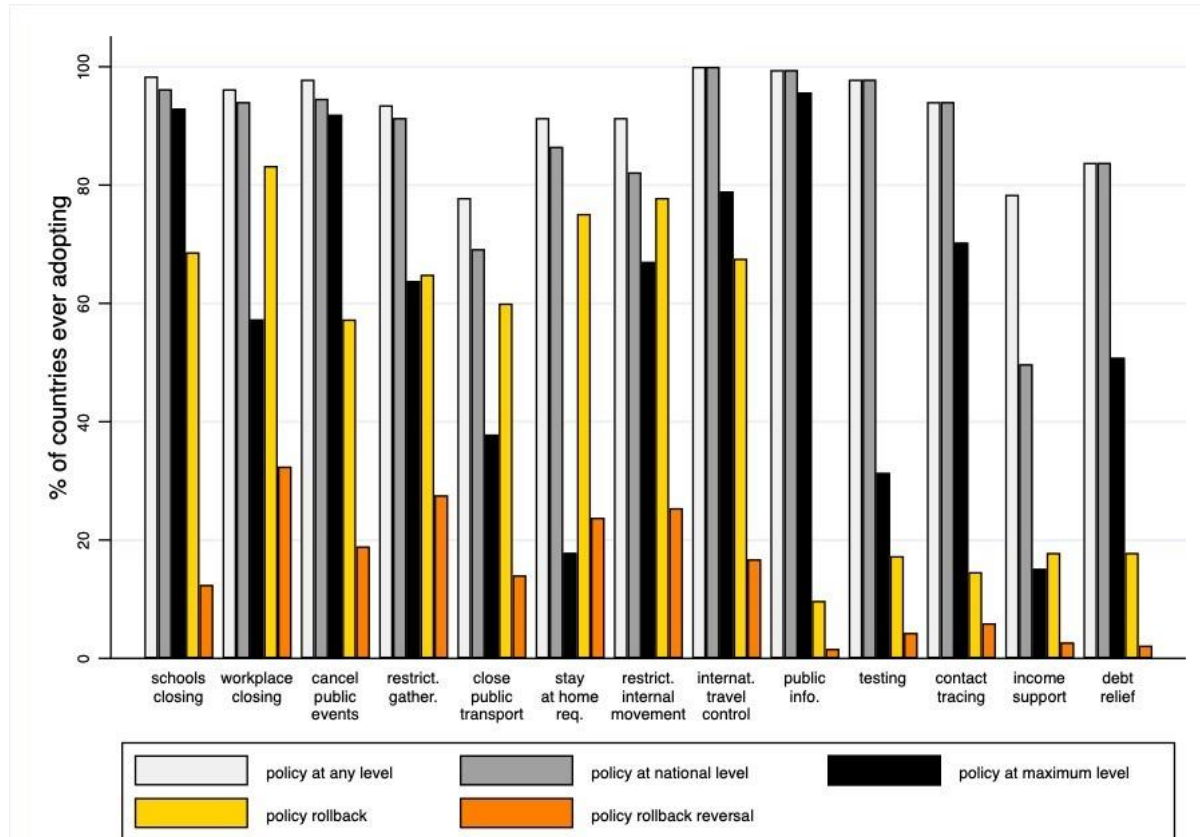
- Government Response Index (GRI)
- Containment and Health Index (CHI)
- ◇ Economic Support Index (ESI)

Baseline period 3 Jan - 6 Feb  
Change calculated for 15 Feb - 27 Aug



Economic Support Index

# Patterns: All policies are widely observed, but not with the same duration and degree





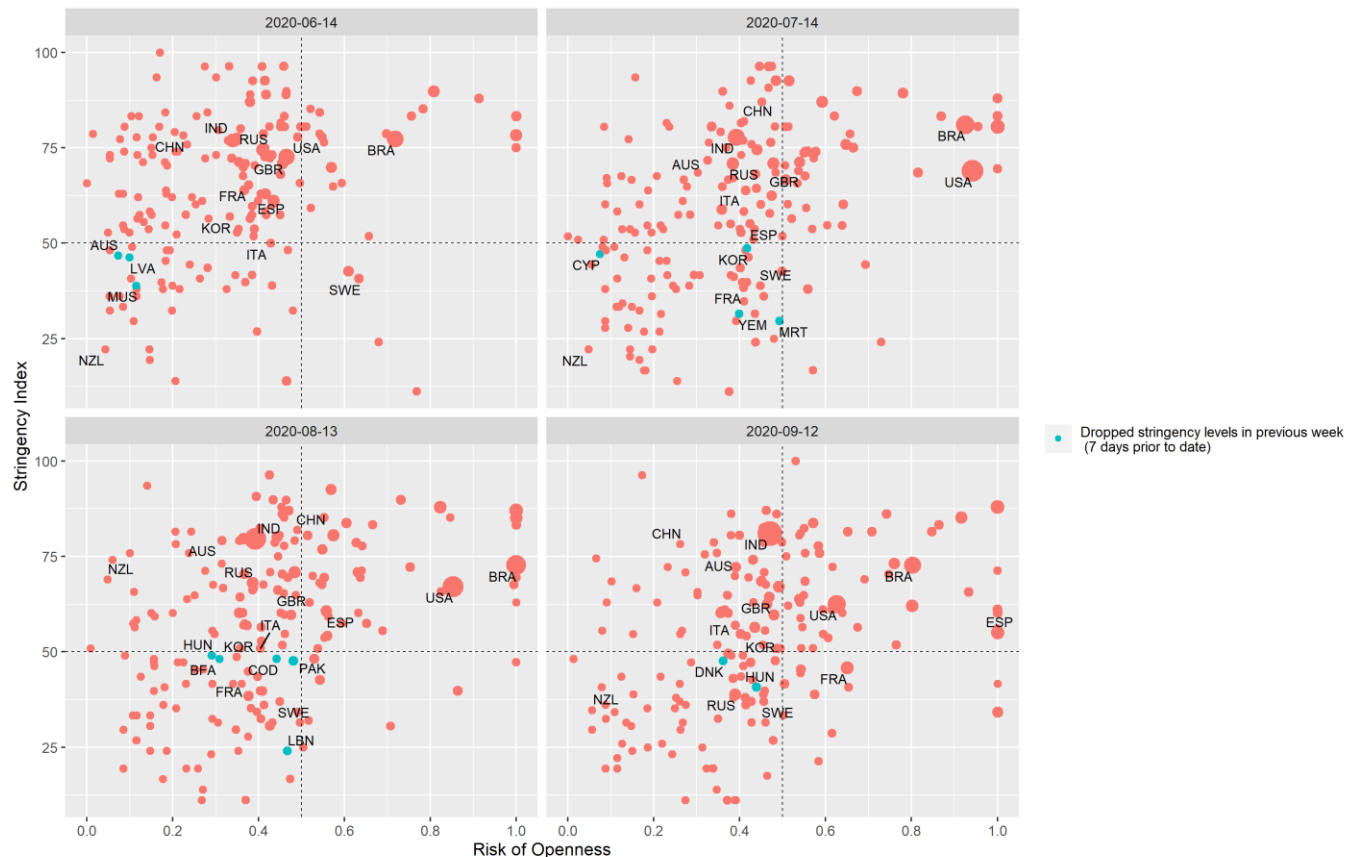
# Patterns: Risk of openness



Bubble Size reflects number of new cases

Source: Oxford COVID-19 Government Response Tracker. More at <https://github.com/OxCGRT/covid-policy-tracker> or [bsg.ox.ac.uk/covidtracker](https://bsg.ox.ac.uk/covidtracker)

# Patterns: Risk of openness

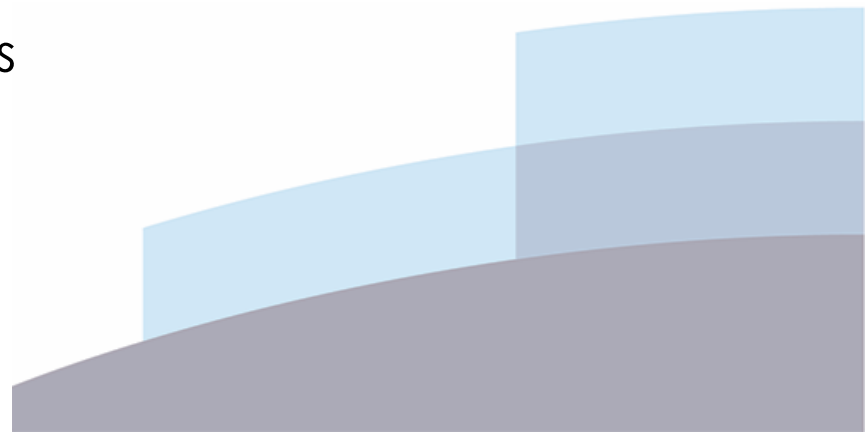


Bubble Size reflects number of new cases

Source: Oxford COVID-19 Government Response Tracker. More at <https://github.com/OxCGRT/covid-policy-tracker> or [bsg.ox.ac.uk/covidtracker](https://bsg.ox.ac.uk/covidtracker)

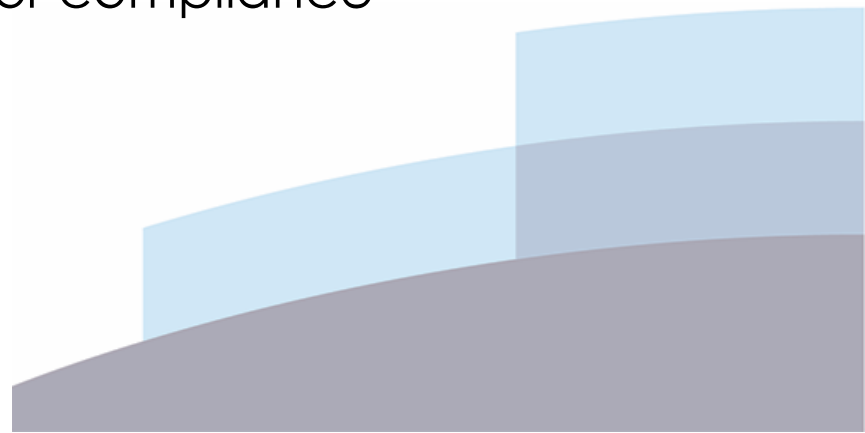
# Strengths and limitations

- Ordinal scale provides more comparability than binary measures, but groups responses into general buckets
- Less granularity for large, heterogenous jurisdictions (captures dominant tendency), importance of sub-national measures
- Time-series format facilitates analysis
- Up-to-date, but lag in revision



# Strengths and limitations

- Human judgement > automation
- Linear indices provide simple summaries of patterns, but should be tailored for analytic purposes
- Does not measure implementation or compliance



# Future directions



- "Building the airplane as we fly it"
- Plans:
  - New indicators
  - More subnational jurisdictions
  - Linking to behavior with survey data
  - Qualitative deep-dives (e.g. Regional reports and US schools reports)
- To learn more:
  - Project summary: [www.bsg.ox.ac.uk/covidtracker](http://www.bsg.ox.ac.uk/covidtracker)
  - Interactive visualization from OWID: <https://ourworldindata.org/policy-responses-covid>
  - Video: <https://vimeo.com/463163595>
  - Data and outputs on GitHub: <https://github.com/OxCGRT>
  - Always seeking collaborators and contributors!