



EUROPEAN CENTRAL BANK

EUROSYSTEM

PRESS RELEASE

22 May 2015

Euro area investment fund statistics March 2015

In March 2015, the amount outstanding of shares/units issued by euro area investment funds other than money market funds was €971 billion higher than one quarter earlier in December 2014. This increase was due mainly to increases in share/unit prices.

The **amount outstanding of shares/units issued by euro area investment funds other than money market funds** increased to €9,421 billion in March 2015, from €8,450 billion in December 2014. Over the same period, the amount outstanding of shares/units issued by euro area money market funds increased to €1,012 billion from €917 billion.

Transactions¹ in shares/units issued by euro area investment funds other than money market funds amounted to €256 billion in the first quarter of 2015, while transactions in shares/units issued by money market funds amounted to €48 billion.

The annual growth rate of shares/units issued by euro area investment funds other than money market funds, calculated on the basis of transactions, was 9.0% in March 2015, while the annual growth rate of shares/units issued by euro area money market funds was 2.4%.

¹Transactions in shares/units issued mainly reflect the difference between shares/units issued and those redeemed, but may also include other transactions, such as those resulting from dividend payments received or distributed by the fund.

Investment fund shares/units issued

(EUR billions and annual growth rates; not seasonally adjusted; amounts outstanding at the end of the period, transactions during the period)

| | 2014 | | | | 2015 | | | |
|--------------------------------------------------------|-------|-------|-------|-------|-------|-------|-------|-------|
| | Q1 | Q2 | Q3 | Q4 | Q1 | Q1 | | |
| | | | | | | Jan. | Feb. | Mar. |
| <u>Investment funds other than money market funds:</u> | | | | | | | | |
| Amount outstanding | 7,487 | 7,864 | 8,191 | 8,450 | 9,421 | 8,863 | 9,076 | 9,421 |
| Transactions | 174 | 188 | 172 | 95 | 256 | 69 | 91 | 96 |
| Annual growth rate (%) | 7.0 | 8.2 | 8.9 | 8.5 | 9.0 | 8.7 | 8.9 | 9.0 |
| <u>Money market funds:</u> | | | | | | | | |
| Amount outstanding | 903 | 883 | 920 | 917 | 1,012 | 972 | 1,001 | 1,012 |
| Transactions | 84 | -28 | 13 | -9 | 48 | 28 | 20 | 0 |
| Annual growth rate (%) | 1.2 | 2.9 | 5.4 | 7.3 | 2.4 | -0.2 | 1.3 | 2.4 |

Source: ECB.

Regarding the **assets of euro area investment funds other than money market funds**, the annual growth rate of securities other than shares was 9.5% in March 2015, with transactions amounting to €141 billion during the first quarter. In the case of shares and other equity the corresponding annual growth rate was 3.4%, with first-quarter transactions of €5 billion. For holdings of investment fund shares/units the annual growth rate was 13.6%, with first-quarter transactions of €49 billion.

In terms of the **breakdown by investment policy**, the annual growth rate of shares/units issued by bond funds was 7.2% in March 2015. Transactions in shares/units issued by bond funds amounted to €91 billion in the first quarter of 2015. In the case of equity funds, the corresponding annual growth rate was 4.2%, with first quarter transactions of €20 billion. For mixed funds, the corresponding figures were 15.6% and €121 billion.

Regarding the **assets of euro area money market funds**, the annual growth rate of securities other than shares was 5.6% in March 2015, with transactions amounting to €37 billion during the first quarter (within this item, the transactions in securities issued by euro area residents were €36 billion); for deposit and loan claims the annual rate of change was 0.0% and transactions during the first quarter equalled €6 billion.

For media queries, please contact Eszter Miltényi-Torstensson, tel.: +49 69 1344 8034.

Notes

- Euro area-wide reporting under Regulation ECB/2013/38 of 18 October 2013 concerning statistics on the assets and liabilities of investment funds, together with other changes to the statistical reporting framework and practices in several euro area

European Central Bank Directorate General Communications
Global Media Relations Division, Sonnemannstrasse 20, 60314 Frankfurt am Main, Germany
Tel.: +49 69 1344 7455, e-mail: media@ecb.europa.eu, website: www.ecb.europa.eu

Reproduction is permitted provided that the source is acknowledged.

countries, started with effect from the December 2014 reference period. This Regulation implements the European System of Accounts 2010 (ESA 2010) for Investment Funds statistics.

- *Money market funds are presented separately in this press release since they are classified in the monetary financial institutions sector within the European statistical framework, while other types of investment fund are classified in the other financial intermediaries sector.*
- *Further predefined tables, statistical data and methodological notes, as well as the advance release calendar, are available in the "Statistics" section of the ECB's website under [Investment fund statistics](#) and [The balance sheets of monetary financial institutions](#).*

Table I - Assets and liabilities of euro area investment funds

(EUR billions and annual percentage changes; not seasonally adjusted; amounts outstanding at the end of the period; transactions and other changes during the period)

| | 2014 Q4 | 2015 Q1 | | | | |
|---------------------------------------------------------------|--------------------|--------------------|------------------------------|--------------|-----------------------------|----------------------------------------|
| | Amount outstanding | Amount outstanding | Change in amount outstanding | Transactions | Other changes ¹⁾ | Annual percentage change ²⁾ |
| Investment funds other than money market funds | | | | | | |
| Assets | | | | | | |
| Deposits and loan claims | 584 | 667 | 83 | 70 | 13 | 13.7 |
| Securities other than shares | 3611 | 3953 | 342 | 141 | 201 | 9.5 |
| Issued by euro area residents | 1959 | 2072 | 112 | 44 | 68 | 4.8 |
| Issued by non-euro area residents | 1652 | 1881 | 229 | 94 | 135 | 16.3 |
| Shares and other equity | 2741 | 3172 | 431 | 5 | 426 | 3.4 |
| Issued by euro area residents | 928 | 1110 | 182 | 21 | 161 | 2.1 |
| Issued by non-euro area residents | 1811 | 2062 | 251 | -19 | 270 | 4.8 |
| Investment fund shares/units (incl. money market fund shares) | 1398 | 1552 | 155 | 49 | 106 | 13.6 |
| Issued by euro area residents | 1196 | 1332 | 136 | 49 | 87 | 15.6 |
| Issued by non-euro area residents | 202 | 221 | 19 | 0 | 19 | 1.8 |
| Non-financial assets | 267 | 270 | 3 | 1 | 1 | 2.8 |
| Other assets | 901 | 923 | 22 | -29 | 51 | -13.0 |
| Liabilities | | | | | | |
| Investment fund shares/units | 8450 | 9421 | 971 | 256 | 714 | 9.0 |
| Loans and deposits received | 203 | 235 | 32 | 25 | 6 | 20.5 |
| Other liabilities | 848 | 882 | 34 | -43 | 77 | -22.7 |
| Total | 9502 | 10537 | 1035 | 237 | 799 | 6.3 |
| Money market funds | | | | | | |
| Assets | | | | | | |
| Deposits and loan claims | 178 | 192 | 14 | 6 | 8 | 0.0 |
| Securities other than shares | 723 | 798 | 75 | 37 | 38 | 5.6 |
| Issued by euro area residents | 364 | 408 | 45 | 36 | 9 | -1.7 |
| Issued by non-euro area residents | 360 | 390 | 30 | 1 | 29 | 14.3 |
| Shares and other equity | 0 | 1 | 0 | 0 | 0 | 46.3 |
| Money market fund shares/units | 31 | 34 | 3 | 3 | 0 | -16.2 |
| Other assets | 6 | 7 | 1 | 1 | 0 | -5.5 |
| Liabilities | | | | | | |
| Money market fund shares/units | 917 | 1012 | 95 | 48 | 47 | 2.4 |
| Loans and deposits received | 2 | 4 | 1 | 1 | 0 | 93.0 |
| Other liabilities | 20 | 17 | -3 | -3 | 0 | 108.1 |
| Total | 939 | 1032 | 93 | 46 | 47 | 3.5 |

Source: ECB.

- 1) Other changes consist of revaluations due to price and exchange rate changes, as well as statistical reclassifications.
2) Annual percentage changes are calculated on the basis of transactions.

Table 2 - Investment fund shares/units issued by euro area investment funds other than money market funds

(EUR billions and annual percentage changes; not seasonally adjusted; amounts outstanding at the end of the period; transactions and other changes during the period)

| | 2014 Q4 | 2015 Q1 | | | | |
|----------------------------------------------------|--------------------|--------------------|------------------------------|--------------|-----------------------------|----------------------------------------|
| | Amount outstanding | Amount outstanding | Change in amount outstanding | Transactions | Other changes ¹⁾ | Annual percentage change ²⁾ |
| Breakdown by investment policy³⁾ | | | | | | |
| Bond funds | 2719 | 2959 | 239 | 91 | 149 | 7.2 |
| Equity funds | 2407 | 2780 | 374 | 20 | 354 | 4.2 |
| Mixed funds | 2176 | 2445 | 269 | 121 | 149 | 15.6 |
| Real estate funds | 385 | 399 | 14 | 0 | 13 | 4.7 |
| Hedge funds | 189 | 214 | 24 | 4 | 21 | -0.3 |
| Other funds | 574 | 624 | 50 | 21 | 29 | 21.6 |
| Breakdown by type of fund⁴⁾ | | | | | | |
| Open-end funds | 8283 | 9245 | 962 | 258 | 705 | 9.1 |
| Closed-end funds | 168 | 176 | 8 | -1 | 9 | 5.2 |
| Total | 8450 | 9421 | 971 | 256 | 714 | 9.0 |

1) Other changes consist of revaluations due to price and exchange rate changes as well as statistical reclassifications.

2) Annual percentage changes are calculated on the basis of transactions.

3) The breakdown by investment policy is generally based on the types of asset in which the investment funds primarily invest, usually on the basis of a stated strategy (e.g. if the fund invests primarily in shares and other equity, it is allocated to the "equity funds" category). Funds investing in both equity and bonds, without any prevalent policy for either, are allocated to the "mixed funds" category. Hedge funds are classified in line with the statistical definition set out in Guideline ECB/2014/15. In particular, they cover funds with relatively unconstrained investment strategies and few restrictions on the types of financial asset in which they may invest. If a fund cannot be classified as an equity, bond, mixed, real estate or hedge fund, it is included in the residual "other funds" category.

4) The shares/units of open-end funds can be redeemed out of the fund's assets. Closed-end funds are funds with a fixed number of issued shares/units.

Chart 1 Investment fund shares/units issued by euro area investment funds other than money market funds

(EUR billions; not seasonally adjusted; outstanding amounts at the end of the period; transactions during the period; monthly data)

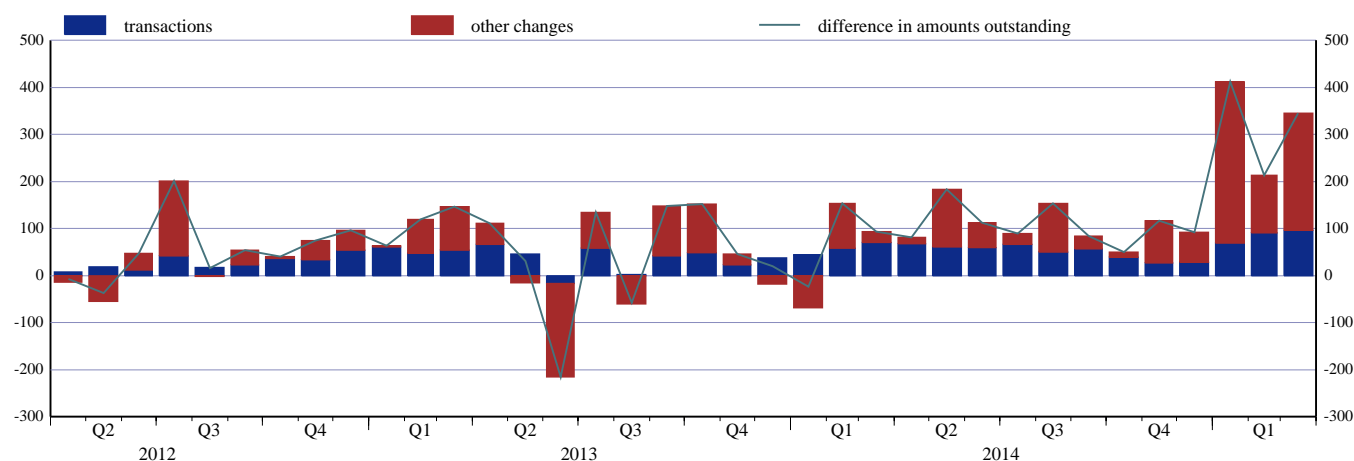
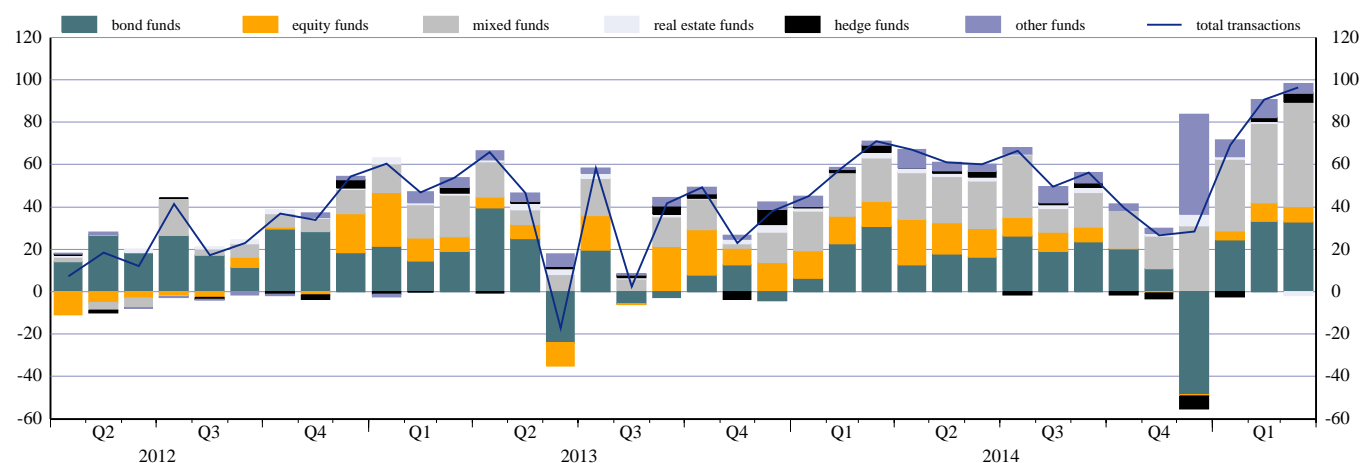


Chart 2 Transactions in shares/units issued by investment policy of euro area investment funds other than money market funds

(EUR billions; not seasonally adjusted; transactions during the period; monthly data)



Source: ECB.